



# MONTHLY MEMBERSHIP PROGRESS REPORT

District 1 H

Results as of: 5/31/2016

GMT: THOMAS MATNEY

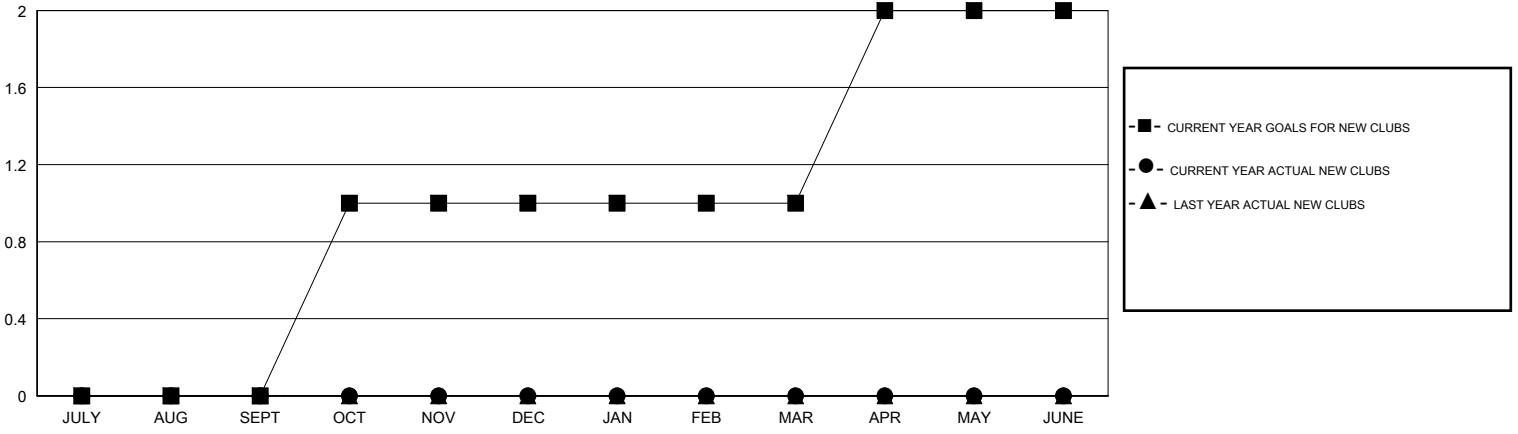
LOCATION ILLINOIS

GMT CA 1

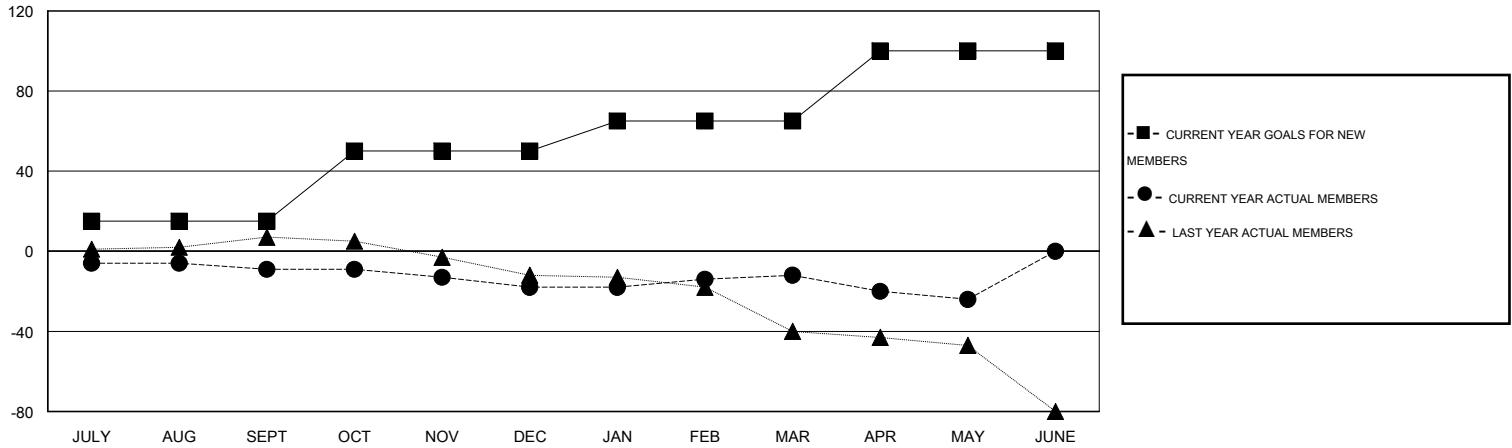
Clubs				
RESULTS FOR 2015-2016				
QUARTER	NEW CLUB GOAL	NEW CLUBS	DROPPED CLUBS	NET GAIN/LOSS
JULY/AUG/SEPT	0	0	0	0
OCT/NOV/DEC	1	0	0	0
JAN/FEB/MAR	0	0	0	0
APR/MAY/JUNE	1	0	0	0

Members				
RESULTS FOR 2015-2016				
QUARTER	NEW MEMBER GOAL	CHARTER AND NEW MEMBERS ADDED	DROPPED MEMBERS	NET GAIN/LOSS
JULY/AUG/SEPT	15	21	30	-9
OCT/NOV/DEC	35	13	22	-9
JAN/FEB/MAR	15	30	24	6
APR/MAY/JUNE	35	4	16	-12

GOALS AND ACTUAL NEW CLUBS CUMULATIVE



GOALS AND ACTUAL MEMBERS CUMULATIVE



DROPPED CLUBS: 0
------------------

24 CLUBS OF 42 ADDED 1 OR MORE NEW MEMBERS

GENDER DISTRIBUTION	
MALE	888 (78.58%)
FEMALE	242 (21.42%)

DROPPED MEMBERS	
DECEASED	17
CLUB CANCELLED	0
OTHER	75
<b>TOTAL</b>	<b>92</b>

[CLICK HERE FOR HEALTH ASSESSMENT DATA](#)

FAMILY UNIT MEMBERS	141
HEAD OF HOUSEHOLD	69
NON-HEAD OF HOUSEHOLD	72